

IGeLU 2018

ROSETTA WORKING GROUP

Rosetta Working Group Purpose

- Empower Rosetta's customer community.
- Provide a strategic connection between Rosetta customers and Ex Libris.
- Provide a vehicle for a shared operational approach to ongoing development and enhancement of Rosetta.
- Contribute, in partnership with Ex Libris, to the larger goal of furthering the cause of digital preservation and digital asset management.
- Expand collaboration with other digital preservation practitioners.
- Provide a platform for the Rosetta community to share experiences and requirements.

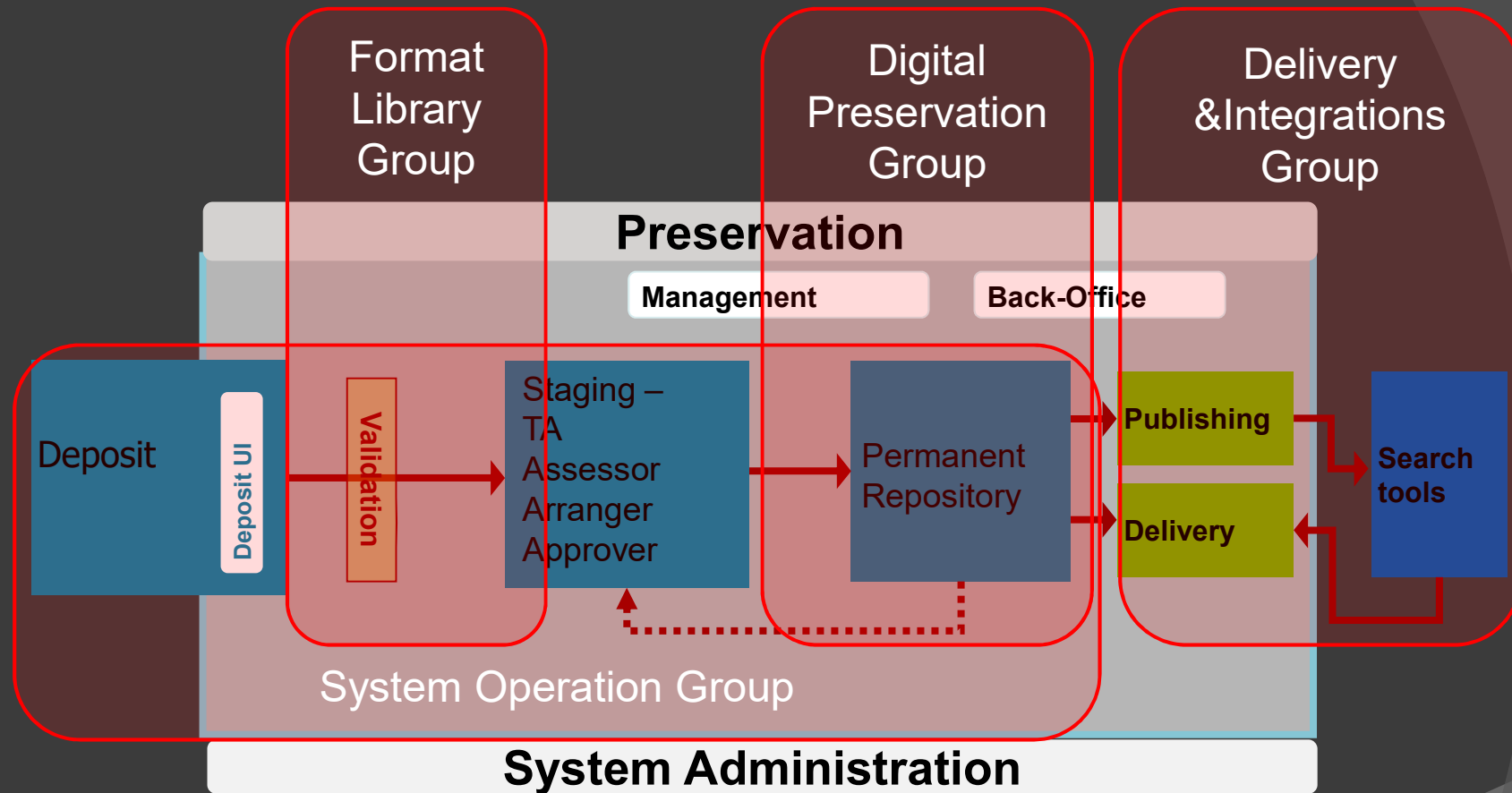
Rosetta Working Group

- 2018/2019 committee

Coordinator	Kirsty Smith
Deputy Coordinator	<i>vacant</i>
Group Leads	Micky Lindlar (DPWG) Peter McKinney (FLWG) Teresa Soleau (DIWG) Aaron Williams (SOWG)
Programme Coordinators	Teresa Soleau (ELUNA) Matthias Gross (IGeLU)

- Rosetta Product Manager - Daniel Greenberg
- IGeLU SC Liaison – Dave Allen (State Library Queensland)
- ELUNA SC Liaison – John Greer (University of Montana)

Rosetta System – Sub Groups



Anyone can elect to participate in one or more of the groups

Rosetta Working Group Meeting June 2018 Getty, LA



Annual Working Group Meeting

- Opportunity for Rosetta customers to meet and knowledge share and discuss enhancement ideas with Ex Libris.
- Remote attendance trialled *“enabled greater participation and strengthened the discussions”*
- 2019
3rd – 5th June RMIT Melbourne, Australia

Looking back - What's gone well

- ◉ Seeing wider participation in the Sub Working Groups.
- ◉ Getting more formal and consistent processes in place.
- ◉ Better alignment with Ex Libris development timetable.
- ◉ Sub Working Groups enable a better focus, and more transparent process for identifying potential enhancements.
- ◉ Sub Working Groups providing opportunity for knowledge exchange, in addition to enhancement work.
- ◉ Seeing increased use of wiki, providing a useful knowledge repository.

What hasn't gone so well

- ⦿ Need greater consistency in methods of communication and working processes.
- ⦿ Need to get better at meeting dates/deadlines, and ensuring enough time for genuine feedback.
- ⦿ Inconsistent evaluation processes / criteria.
- ⦿ Wider participation not necessarily resulting in increased resources to work on things.

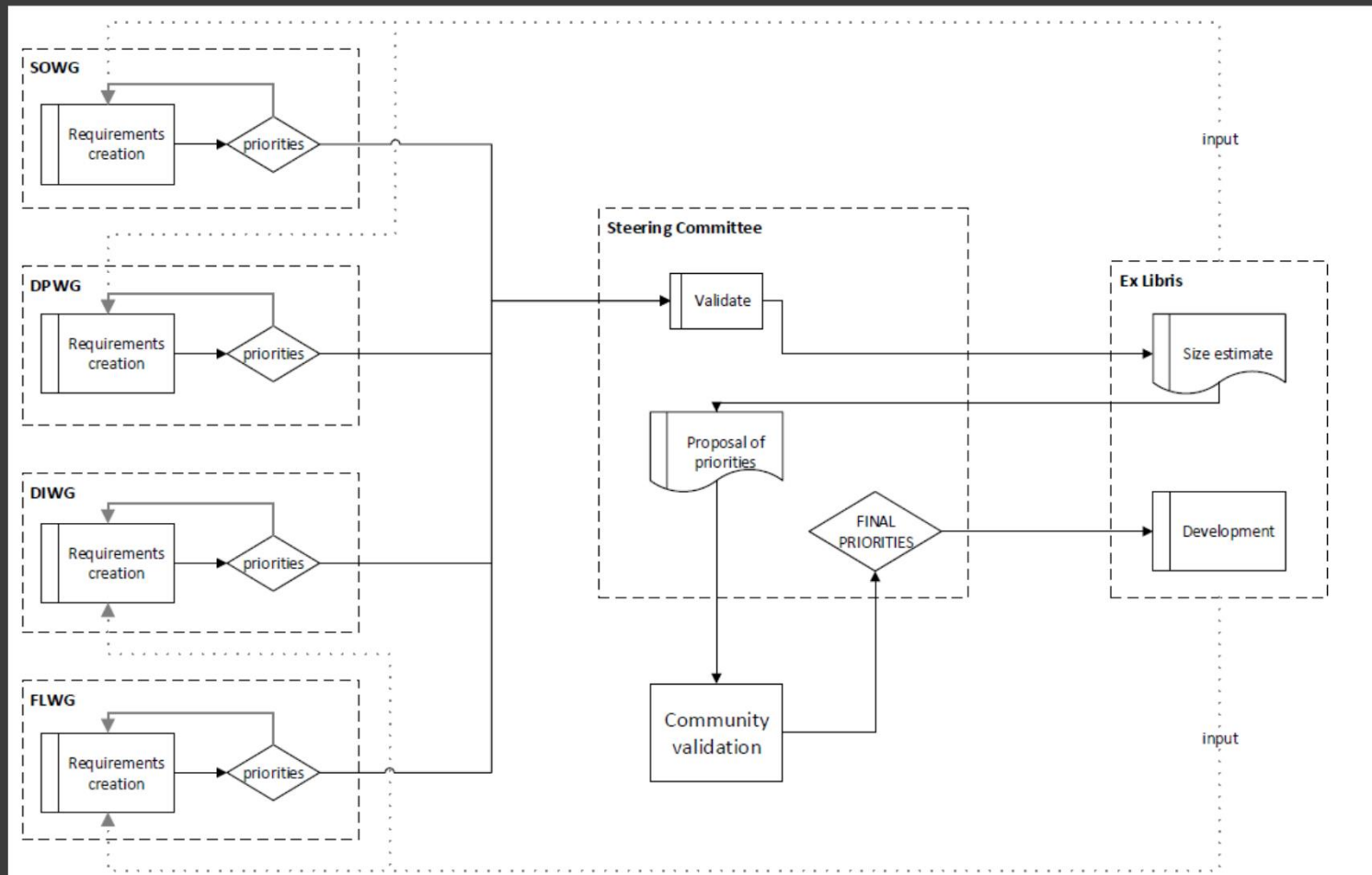
Enhancements

- ◉ Work to Rosetta development release cycle.
 - ◉ First set of enhancement requests from WG to Ex Libris for release 6.
 - ◉ Ex Libris no obligation to complete any of the enhancements.. but track record of making improvements based on our requests.
-
- ◉ Decision taken when joining ELUNA/IGeLU not to adopt NERS system.
 - ◉ *NERS remains an option if community feels would be better way to manage enhancement process.*

WG enhancements for version 6

WG Ref#	Enhancement
SO02	Reliable Indexing #3 (Fault detection during index queries)
SO03	Native SSL Support (support on application level for external access)
SO04	Add Rep with AIP update
SO05	Consistency Checks (To start root cause analysis of underlying issues)
SO06	System Error - access to logs
AR01 (DI)	File level access rights
FL01	Mime type Comparison
FL02	Local risk identification
DP01	Add Semantic Unit Preservation level Type
DP02	Validate DNX during ingest
DI02	SRU deep link

Enhancement process going forward



Digital Preservation – year ahead

- ⦿ Knowledge Exchange “Preservation Planning”
 - webinars demonstrating institutional approach
- ⦿ Versioning of METS and DNX metadata schematas and their public documentation population
- ⦿ Discussion around “nested Intellectual Entities” and “PREMIS conformance” for potential future enhancement requests

Format Library – year ahead

- ⦿ Reconsidering Validation Stack (*virus, fixity, format ID, extraction*)
- ⦿ Finalising events for validation stack rules
- ⦿ Considering risk as a local phenomenon

Delivery & Integrations – year ahead

- Refining request from last year “Enforce file download in Rosetta delivery”
- Suite of enhancements around the General IE Viewer
- Defining needs regarding PREMIS 3/Nested IEs and Collections Management
- Information sharing about existing and desired integrations with other systems

System Operation – year ahead

- Follow-up conversations on Consistency Checks enhancement
- Follow-up conversations on End to end SSL encryption for servers
- Monitoring and Error handling
 - Health of servers and error log monitoring

Moving Forward

- ⦿ What are you not seeing that would be helpful - both as new customers and seasoned users?
- ⦿ Issues with participation:
 - ⦿ What's preventing you from engaging?
 - ⦿ How can we work to get more customers involved?
- ⦿ Rosetta Wiki –
 - Get in touch with Teresa Soleau (tsoleau@getty.edu) if you need access to the shared wiki space.