

Indigo V3.0: Enhancements and Known defects

Contents

New features	2
Indigo for Published Collections	2
Emu Reference number search	5
Known Defects	5
CMS Search	5
File Prefix	5
File Favourite directories	5
Bulk Upload	5
File name	6
Job Queue error	7
Thumb.db file	7
Provenance Note	8
Structure Map	8

About this document

The purpose of this document is to provide information on the latest status of the known defects of the INDIGO system and their workaround. The document is intended to provide information to all Indigo users.

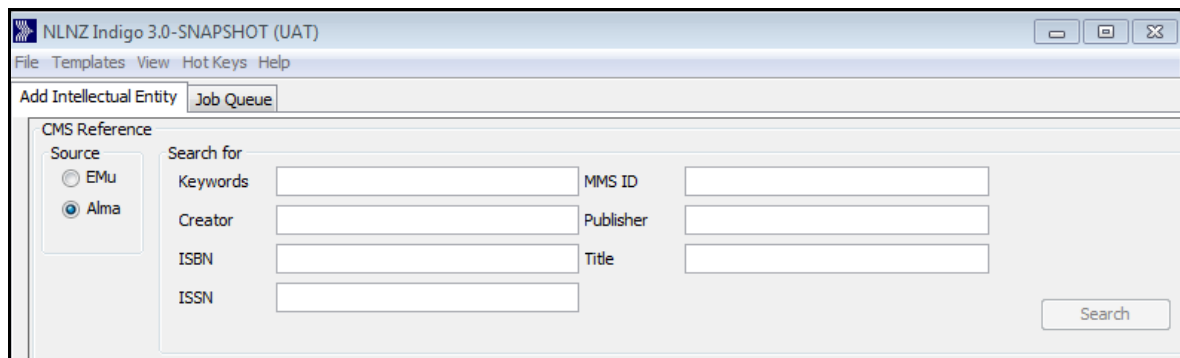
Related documentation – “Indigo User Guide: A step by step guide for Indigo users”

New features

Indigo for Published Collections

This covers the changes regarding integration for Alma. Any work flows that previously had voyager as an option now replaced with Alma. So we get search interface options for that.

Image Digitisation:



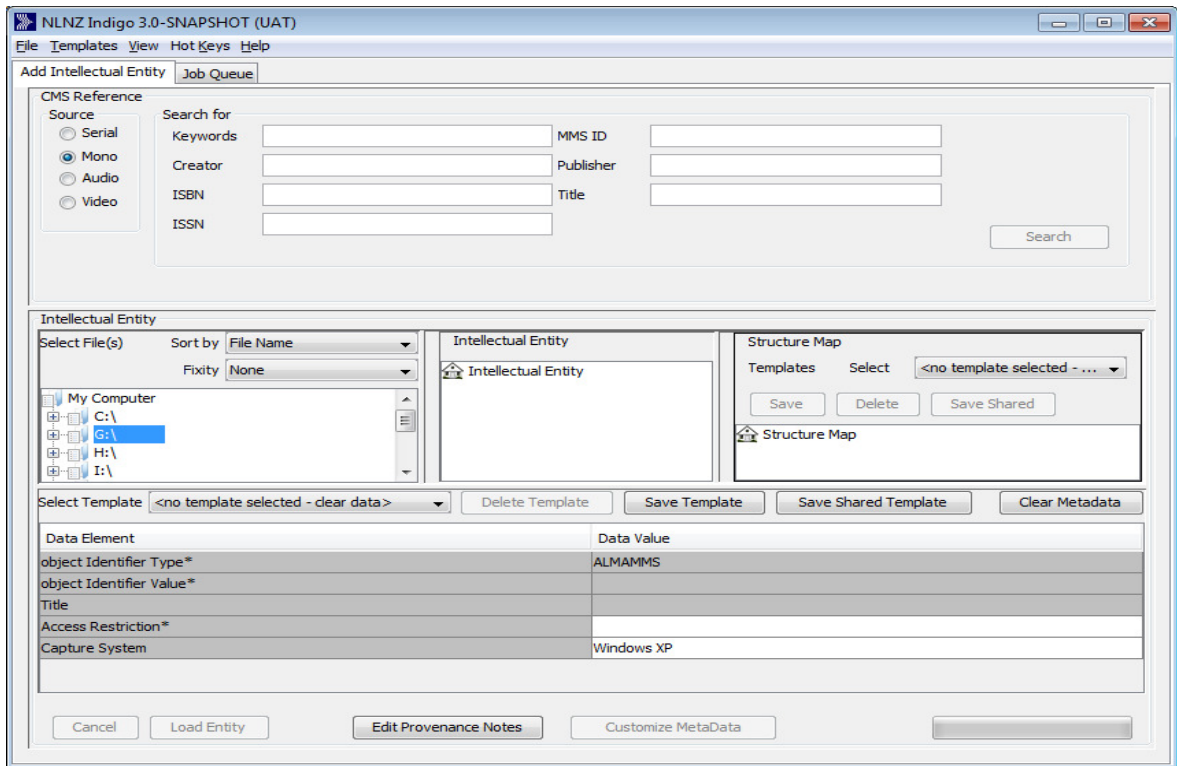
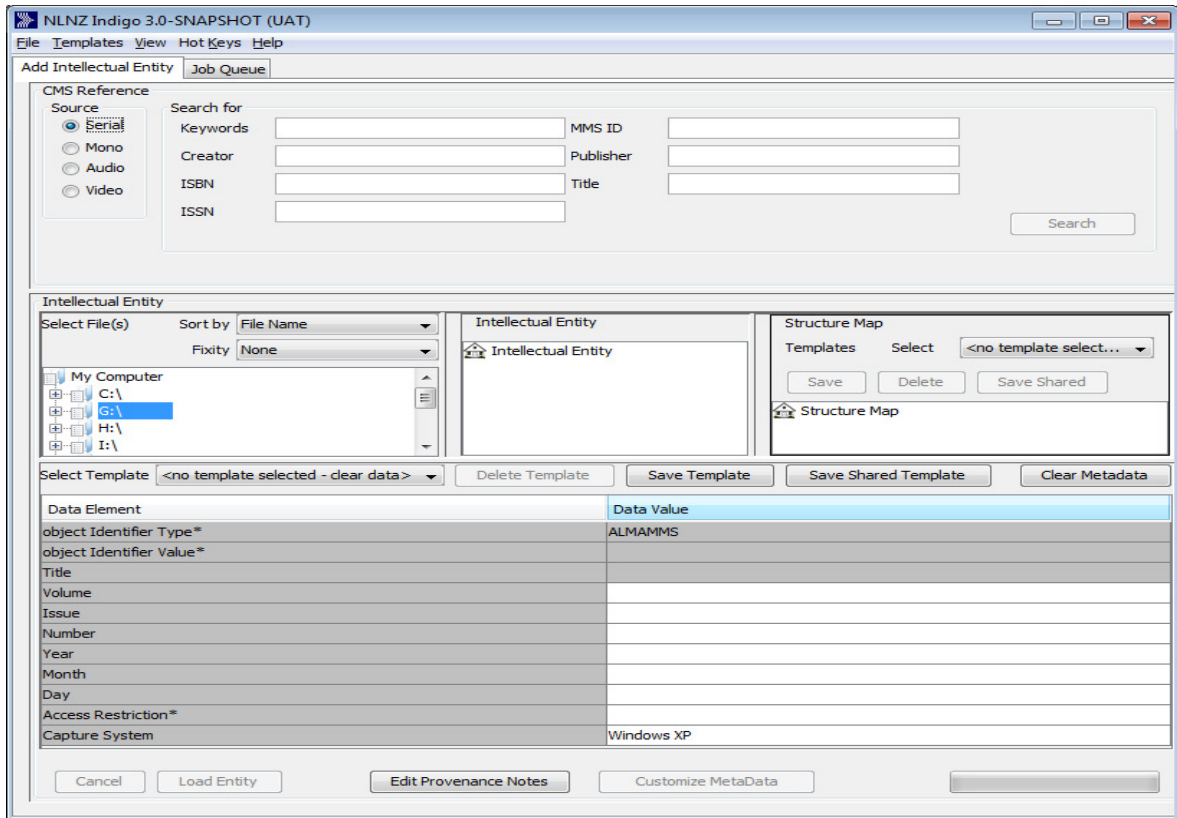
The screenshot shows the NLNZ Indigo 3.0-SNAPSHOT (UAT) application window. The title bar includes the application name and standard window controls. The menu bar contains 'File', 'Templates', 'View', 'HotKeys', and 'Help'. Below the menu bar, there are two tabs: 'Add Intellectual Entity' and 'Job Queue'. The main content area is titled 'CMS Reference' and contains a 'Source' section with radio buttons for 'EMu' and 'Alma', where 'Alma' is selected. To the right of the source selection is a 'Search for' section with input fields for 'Keywords', 'MMS ID', 'Creator', 'Publisher', 'ISBN', 'Title', and 'ISSN'. A 'Search' button is located at the bottom right of the search area.

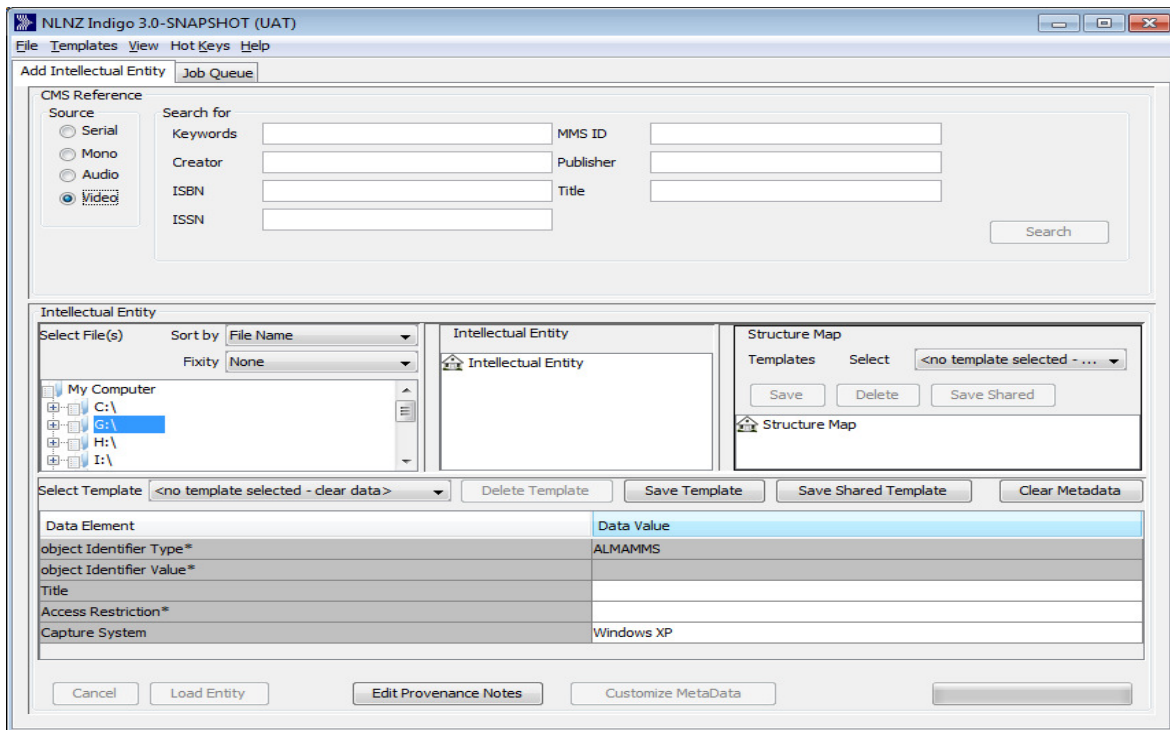
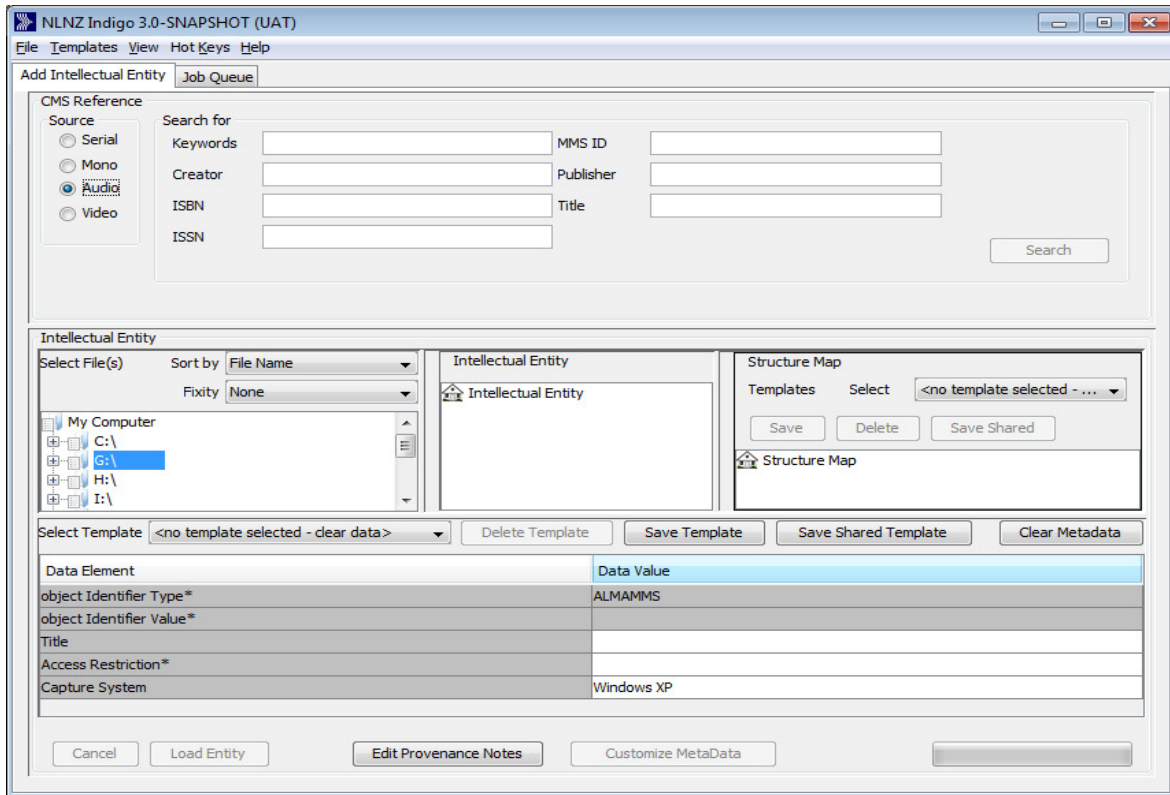
For Published User group:

The UI has changed.

1. In CMS Reference section, no input panes are hidden or require toggling (Staff Mediated is no longer there).
2. There is no need to select a Producer and material flow – all Published deposits are from @NLNZ Published.
3. dc:title is taken from CMS and can be overwritten when the material source is either audio or video.
4. Metadata entry (Data Value) has been modified. Now it is easier to see in which metadata field you are inputting data (in V2.9 the pane is very long.)

Now selecting type of material that deposit i.e. Serial (periodic), Mono (Oneoff), Audio or Video and according to that selection Indigo automatically provides the correct material flow (behind the scenes) and the appropriate metadata screen.





Emu Reference number search

Previously we could search using just 1/1-015199 for reference number search. Now on entering just **1/1-015199** would not return any result. You need to enter the whole number i.e. in this case **1/1-015199-G** in the search field.

Known Defects

CMS Search

Use two different search fields

Expected; matches documents where both terms exist 'And' Operator

Currently system is ignoring one of the search term.

File Prefix

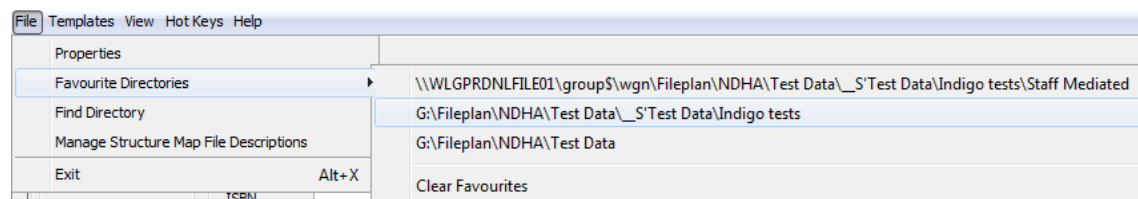
Right click and 'Use file to describe IE root'.

On the 'Entity Name and File Prefix window' edit the entry in 'File Prefix' field and click OK - The File Prefix appears as the entered value.

Defect - the file doesn't appear on the Intellectual Entity section- nothing appears in place of file in 'Select File(s)' section

File Favourite directories

The Favourite directories path has to start with G:\only then this would work



Bulk Upload

1. #1201 : Cancel bulk load - job queue folder does not clear

Doing bulk load - job was cancelled on bulk load screen but that is not cancelling the job properly - SIPs end up still being loaded into Rosetta

Workaround: No workaround available. If at all possible, try cancelling bulk load before clicking 'Submit Jobs' button. If SIP is already in Rosetta then only option is delete.

File name

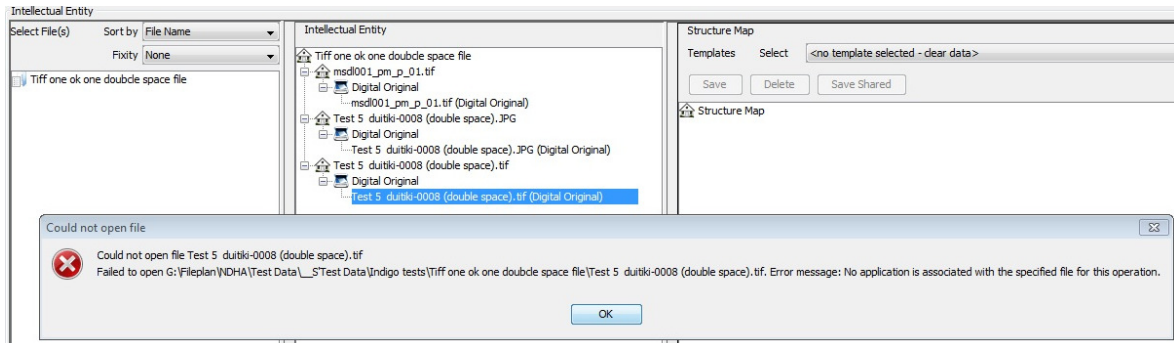
2. #1209: Files with % in filename not opening in Indigo

There appears to be an issue with the windows command Indigo is trying to execute and the % sign in the filename. There's no error being thrown so it isn't obvious what's happening. SIP with this file would move to Rosetta as normal, however, it lands in TA Enrichment.

Workaround: Remove special character % from the filename before loading SIP.

3. #1209: Tiff files with double space in filename won't open from within Indigo.

A normal file with '.tiff' extension works fine. A filename with double space with any other type of extension (including .jpg) works fine. A filename with **double space and .tiff extension** has problem (won't open from within Indigo).



Workaround: You may do one of the following:

- 1). Remove double space from the filename before loading SIP., if you want to open file within Indigo, or
- 2). Leave it as it is, the SIP and file will load as normal in Rosetta.

Job Queue error

4. #394: Job Queue error while loading SIPs

error message 'unable to load job queue'

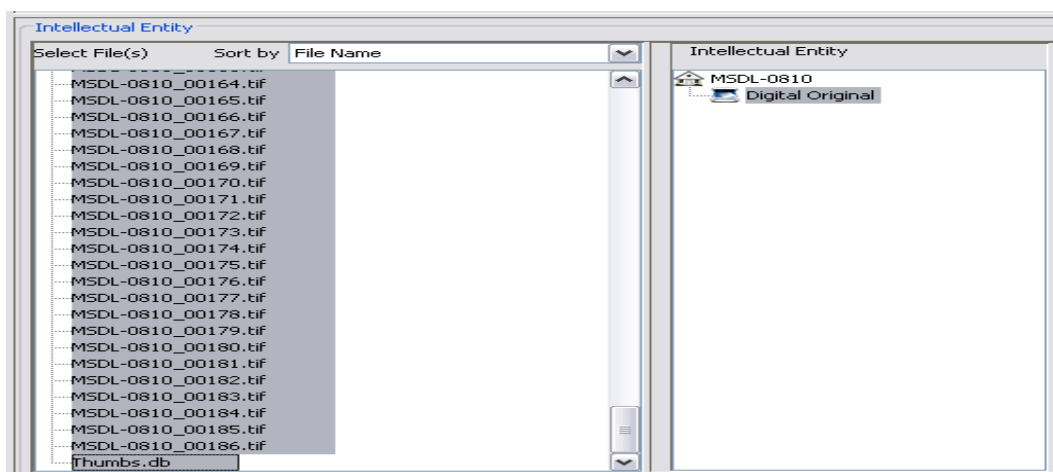


Workaround: No workaround for this, however, when it occurs take note of the file mentioned in the error and email the Indigo log file to NDHA admin for analysis.

Thumb.db file

5. #443: Thumb.db file effect on creating complex IEs.

When folder is set as the root of the IE and thumb.db is one of the file. When all files under the folder are selected and Alt+D is used to create the Digital Original in the IE pane it does not form the IE properly and has no files.



Workaround

When selecting the files to create the Digital Original not to select the thumbnail file.

Provenance Note

6. #911: opening the Provenance Note window clearing the last metadata field filled in on the main Indigo screen "data elements" section.

To reproduce, fill in ALL fields in the "Data elements" section. Next click on the "Edit Provenance Notes" button. Add a Provenance note. Close the window. The last field you filled in will now be cleared to a blank field.

Workaround

If you make sure that 'Load Entity button is active before clicking the 'Edit provenance Notes' button then adding a provenance note would not clear the field in Data Value' section. In other words, click somewhere else on the data element table to 'activate' the Load Entity button and then add provenance note.

Structure Map

7. Ticket #980 : INDIGO creates incorrect IEs and structure maps

When using the "set folder as IE root" method of building your IE, INDIGO performs strangely in one particular circumstance. If, within the root folder, you have a folder called "Preservation Master" which contains files named with the naming convention INDIGO recognises (for example 000001_PM_S_1.wav), Indigo tries to make IEs and structure maps with whatever files it finds that match this file naming convention. This happens as soon as you click "set folder as IE root". So you haven't actually selected any files or anything, and INDIGO is automatically creating a random list of IEs and associated structure maps.

Workaround:

Use alternative methods, no workaround available for this.